

↪ **Stock Information** ↩

Leggett & Platt – 1 Year Price History (As of August 2018)



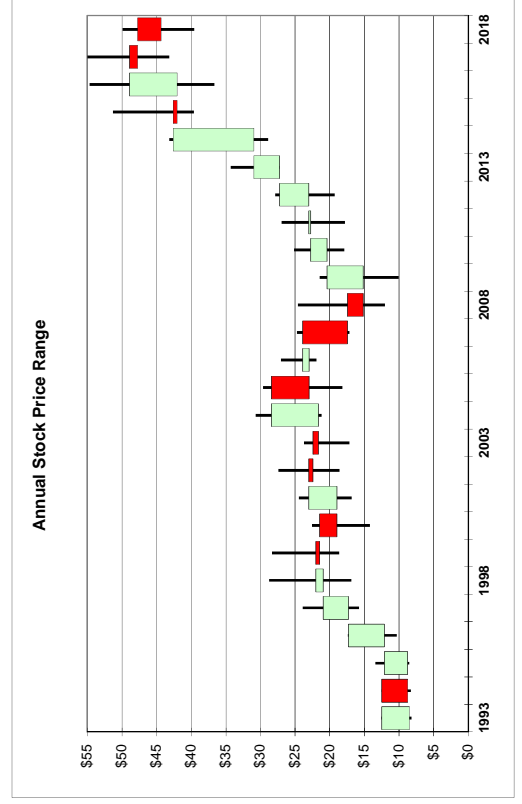
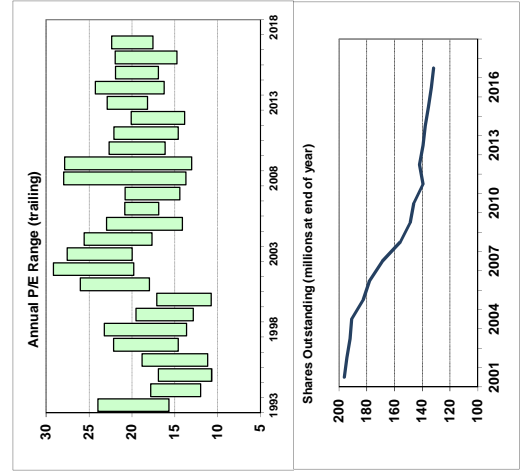
Leggett & Platt – 10 Year Price History (As of August 2018)



	1993	1994	1995	1996	1997	1998	1999	2000	2001	2002	2003	2004	2005	2006	2007	2008	2009	2010	2011	2012	2013	2014	2015	2016	2017	2018
Open	8.50	12.50	8.75	12.13	17.31	20.94	22.00	21.44	18.94	23.00	22.44	21.63	22.96	22.96	23.90	17.44	15.19	20.40	22.76	23.04	27.22	30.94	42.61	42.02	48.88	47.73
High	12.53	12.38	13.44	17.38	23.88	28.75	28.31	22.56	24.45	27.40	23.69	30.68	29.61	27.04	24.73	24.60	21.44	25.15	26.95	27.89	34.28	43.15	51.28	54.63	54.97	49.88
Low	8.19	8.31	8.50	10.31	15.75	16.88	18.63	14.19	16.85	18.60	17.16	21.19	18.19	21.93	17.14	12.03	10.03	17.89	17.80	19.26	27.25	28.90	39.58	36.64	43.17	39.57
Close	12.50	8.75	12.13	17.31	20.94	22.00	21.44	18.94	23.00	22.44	21.63	28.43	22.96	23.90	17.44	15.19	20.40	22.76	23.04	27.22	30.94	42.61	42.02	48.88	47.73	44.36
EPS *	0.523	0.695	0.795	0.925	1.08	1.24	1.45	1.32	0.94	0.94	0.86	1.20	1.29	1.30	1.19	0.88	0.77	1.11	1.22	1.39	1.50	1.78	2.34	2.49	2.46	2.46
P/E Low (ttm)	16	12	11	11	15	14	13	11	18	20	18	14	17	14	14	13	16	15	14	15	14	16	17	17	15	18
P/E High (ttm)	24	18	17	19	22	23	20	17	26	29	28	26	23	21	21	28	28	23	22	20	23	24	22	22	22	22
Shares Outstanding, end of pd (millions, split adjusted)	161.2	166.4	167.5	184.2	192.8	197.7	196.9	196.1	196.3	194.5	192.1	190.9	182.6	178.0	168.7	155.8	148.8	146.2	139.4	142.1	139.4	137.8	135.6	133.5	131.9	131.9
Fraction of Shares Traded	37%	50%	51%	28%	30%	36%	55%	62%	54%	66%	73%	77%	101%	106%	220%	446%	308%	282%	301%	311%	199%	174%	190%	167%	181%	

* EPS beginning in 2002 is from continuing operations and is adjusted to exclude unusual items.

Data	1993	1994	1995	1996	1997	1998	1999	2000	2001	2002	2003	2004	2005	2006	2007	2008	2009	2010	2011	2012	2013	2014	2015	2016	2017	2018
Jan 1 Open	8.50	12.38	8.69	12.00	17.06	20.94	22.06	21.25	18.50	22.86	22.56	21.61	28.30	23.16	23.99	17.34	15.29	20.50	22.89	23.50	27.62	30.87	42.64	41.27	49.25	47.93
Dec 31 Close	12.50	8.75	12.13	17.31	20.94	22.00	21.44	18.94	23.00	22.44	21.63	28.43	22.96	23.90	17.44	15.19	20.40	22.76	23.04	27.22	30.94	42.61	42.02	48.88	47.73	0.00
Yearly Low	8.19	8.31	8.50	10.31	15.75	16.88	18.63	14.19	16.85	18.60	17.16	21.19	18.19	21.93	17.14	12.03	10.03	17.89	17.80	19.26	27.25	28.90	39.58	36.64	43.17	39.57
Minimum Close	8.22	8.38	8.63	10.31	15.81	17.13	18.81	14.25	17.00	18.90	17.40	21.35	18.55	22.39	17.27	12.24	10.21	18.26	17.87	19.49	27.40	29.06	40.68	37.79	43.50	40.38
Average Close	9.86	9.84	11.03	13.51	19.85	24.26	22.85	17.88	21.20	23.50	20.92	25.78	25.45	24.23	21.72	17.51	16.25	21.43	22.77	23.35	30.84	34.54	45.60	47.94	49.15	44.36
Maximum Close	12.50	11.84	13.38	17.31	23.63	28.44	27.88	22.25	24.23	27.16	23.57	30.56	29.44	26.96	24.62	23.98	20.82	25.02	26.37	27.85	34.19	42.95	51.00	54.63	54.04	48.80
Yearly High	12.53	12.38	13.44	17.38	23.88	28.75	28.31	22.56	24.45	27.40	23.69	30.68	29.61	27.04	24.73	24.60	21.44	25.15	26.95	27.89	34.28	43.15	51.28	54.63	54.97	49.88
Minimum Daily Volume (000)	22	40	21	11	24	27	96	75	123	137	90	131	230	189	496	370	179	452	477	358	266	338	249	281	207	517
Average Daily Volume (000)	233	333	341	198	231	283	430	484	430	509	558	585	735	752	1487	2749	1819	1635	1663	1766	1099	955	1025	887	953	1386
Maximum Daily Volume (000)	2810	1554	1432	1239	1421	1288	12525	4037	2106	2625	2391	3288	7957	2645	5077	9448	6074	5251	6344	8723	3298	3609	4007	2889	3856	3727
Yearly Volume (millions)	59.0	83.9	86.2	50.8	58.3	71.2	108.4	121.9	106.5	128.3	140.6	147.5	185.1	188.8	371.8	695.5	458.4	412.0	419.1	441.6	278.0	239.6	258.2	223.4	239.1	173.280



Note: Volumes are in thousands of shares.

Monthly Stock Price Info

Year	Data	Month													
		1	2	3	4	5	6	7	8	9	10	11	12	Grand Total	
2014	Monthly Low	29.31	28.90	31.01	31.54	32.16	33.14	32.53	32.57	34.82	32.64	39.30	39.38	28.90	
	Minimum Close	29.49	29.06	31.20	31.94	32.27	33.46	32.55	32.64	34.92	33.18	39.73	41.31	29.06	
	Average Close	30.14	30.79	31.94	32.67	33.30	33.96	33.39	34.28	35.26	35.61	40.96	41.98	34.54	
	Maximum Close	30.71	32.05	32.64	33.74	33.93	34.80	34.36	35.21	35.51	39.38	42.09	42.95	42.95	
	Monthly High	30.94	32.25	32.75	33.85	34.06	34.80	34.49	35.21	35.94	39.71	42.47	43.15	43.15	
	Minimum Daily Volume	536	578	484	528	528	504	445	338	447	447	815	602	384	338
	Average Daily Volume	1162	898	850	914	888	826	930	680	848	848	1277	1012	1130	955
	Maximum Daily Volume	2621	1489	1704	2188	1533	1868	2199	1326	1380	1380	2232	1889	3609	3609
	Monthly Volume	24,411	17,053	17,854	19,201	18,658	17,350	19,520	14,279	17,808	29,374	19,234	24,856	239,598	
	Monthly Low	27.25	28.95	30.22	31.57	31.57	29.59	29.95	28.83	28.83	28.59	28.00	28.93	28.79	27.25
2013	Minimum Close	27.40	29.04	30.67	31.93	31.57	30.09	30.71	28.92	28.86	28.64	29.11	28.94	27.40	
	Average Close	28.52	29.89	32.32	32.95	33.13	31.49	31.64	30.26	30.30	29.63	29.72	30.01	30.84	
	Maximum Close	29.71	30.70	33.78	33.79	34.19	32.78	33.35	31.92	31.24	30.45	30.40	31.08	34.19	
	Monthly High	29.92	30.88	33.80	34.07	34.28	32.94	33.58	32.03	31.32	30.50	30.55	31.33	34.28	
	Minimum Daily Volume	600	914	687	580	618	557	371	462	476	687	412	266	266	
	Average Daily Volume	1175	1506	1032	1153	1007	1357	909	869	1209	1119	860	1061	1099	
	Maximum Daily Volume	3298	2955	1707	1807	2041	3230	2087	1465	2718	2636	1148	2511	3298	
	Monthly Volume	24,666	28,613	20,648	25,374	22,149	27,150	20,897	19,123	24,176	25,729	17,199	22,291	278,015	
	Monthly Low	21.29	21.26	21.90	21.71	19.75	19.26	20.50	22.73	22.73	23.57	24.35	25.93	26.12	19.26
	2012	Minimum Close	21.46	21.36	21.97	21.75	19.89	19.49	20.85	22.77	23.90	24.45	26.13	26.36	19.49
Average Close		22.82	22.15	22.70	22.79	20.86	20.33	21.59	23.42	24.63	25.29	26.98	26.93	23.35	
Maximum Close		23.60	23.39	23.26	23.67	22.02	21.13	23.18	23.89	25.17	26.53	27.85	27.85	27.85	
Monthly High		23.73	23.47	23.37	23.98	22.30	21.13	23.31	23.99	25.24	26.95	27.85	27.89	27.89	
Minimum Daily Volume		923	1226	733	998	1019	965	657	583	903	743	358	442	358	
Average Daily Volume		1829	1990	1939	2011	1821	2363	2205	1453	1485	1417	1255	1431	1766	
Maximum Daily Volume		4063	4845	5457	7210	3773	8723	7920	2898	3311	4521	3277	3694	8723	
Monthly Volume		36,571	39,791	42,664	40,221	40,056	49,616	46,295	33,417	28,218	29,767	26,365	28,616	441,598	
Monthly Low		22.25	22.16	22.31	22.56	25.06	22.80	21.66	17.80	19.33	18.37	20.46	21.33	17.80	
2011		Minimum Close	22.39	22.37	22.56	22.72	25.40	22.88	21.70	17.87	19.56	18.61	20.48	21.40	17.87
	Average Close	22.85	22.95	23.46	23.64	25.94	23.70	23.56	20.10	20.89	21.88	21.74	22.75	22.77	
	Maximum Close	23.23	23.62	24.59	26.29	26.37	25.13	24.90	22.19	22.11	23.92	22.65	23.81	26.37	
	Monthly High	23.47	23.69	24.68	26.95	26.60	25.90	24.99	22.26	22.46	24.84	22.81	23.85	26.95	
	Minimum Daily Volume	521	836	812	728	805	951	638	1046	1008	1143	477	640	477	
	Average Daily Volume	1051	1356	1571	1441	1636	1635	1411	2665	1904	2056	1334	1730	1663	
Maximum Daily Volume	3093	2945	3908	4577	3273	2927	3247	6344	4812	4615	2936	4808	6344		
Monthly Volume	21,012	25,758	36,137	28,825	34,362	35,962	28,223	61,306	39,985	43,171	28,014	36,326	419,082		

TOP HOLDERS - INSTITUTIONAL & FORMER MANAGEMENT AND DIRECTORS (in millions of shares)

Institution Name	2018			2017			2016			2015			2014			2013				
	Dec	Sept	Jun	Mar	Dec	Sept	Jun	Mar	Dec	Sept	Jun	Mar	Dec	Sept	Jun	Mar	Dec	Sept	Jun	Mar
1 VANGUARD GROUP, INC.	13.8	13.6	14.5	14.4	14.8	15.4	15.4	14.8	14.3	14.1	13.1	12.0	10.6	10.1	10.1	10.0	9.9	9.7	9.5	8.9
2 STATE STREET GLOBAL ADVISORS	10.7	10.8	10.9	10.0	10.4	10.9	11.4	10.0	11.4	10.5	11.1	12.5	13.6	13.9	14.2	14.8	14.9	16.2	15.9	16.1
3 BLACKROCK FUND ADVISORS	9.3	9.9	9.7	9.5	9.4	9.4	8.9	8.7	8.7	8.8	8.7	9.2	9.8	9.6	9.6	9.7	9.6	9.4	9.9	10.2
4 MELLON CAPITAL MANAGEMENT CORP.	3.7	3.8	2.1	2.0	0.8	0.9	0.8	0.8	1.5	1.6	2.4	2.5	1.0	1.1	1.1	1.0	1.0	1.0	1.0	0.9
5 EPOCH INVESTMENT PARTNERS, INC.	3.6	3.0																		
6 CHARLES SCHWAB INVESTMENT ADVISORY, INC	2.7	2.6	2.4	2.3	2.7	3.8	3.5	3.3	3.0	2.9	2.9	2.9	2.8	2.7	2.5	2.2	1.8	1.4		
7 (THOMASPARTNERS, INC.)	2.6	2.6	2.5	1.7																
8 TIMESSQUARE CAPITAL MANAGEMENT, LLC		2.3																		
9 FELIX E. WRIGHT, FORMER CHAIRMAN	1.9	1.9	2.0	2.0	2.0	2.0	2.0	2.0	1.8	1.8	1.8	1.8	1.8	1.8	1.8	1.8	1.8	1.8	1.8	2.3
10 US BANK PRIVATE ASSET MANAGEMENT	1.9	1.7	1.6	1.5	1.5	1.4	1.3	1.2	1.1	1.1	1.1	1.1	1.0	1.0	1.0	1.1	1.1	1.0	0.9	0.9
11 GEODE CAPITAL MANAGEMENT LLC	1.8	1.8	1.8	1.3	1.3	1.3	1.3	1.2	1.2	1.2	1.2	1.2	1.2	1.2	1.2	1.2	1.2	1.2	1.2	1.2
12 NORGES BANK INVESTMENT MGMT (Norway SWF)	1.7	1.7	1.7	1.7	1.7	1.7	1.7	1.4	1.4	1.4	1.3	1.3	1.3	1.1	1.1	1.1	1.1	1.1	1.1	1.1
13 DAVID S. HAFNER, FORMER CHAIRMAN	1.7	1.7	0.6	0.5	0.2	0.2	0.2	0.3	0.1	0.1	0.1	0.1	0.1	0.1	0.1	0.2	0.1	0.1	0.1	0.1
14 HARRY M. CORNELL, JR., FORMER CHAIRMAN	1.7	1.4	0.7	0.6	0.5	0.2	0.2	0.3	0.3	0.1	0.1	0.1	0.1	0.1	0.1	0.2	0.1	0.1	0.1	0.1
15 RAYMOND JAMES & ASSOCIATES, INC.	1.6	1.5	1.6	1.6	1.6	1.6	1.6	1.4	1.4	1.5	1.1	1.3	1.6	2.1	2.0	1.9	1.6	1.3	0.8	0.5
16 ST DENIS J VILLERE & CO, LLC	1.5	1.5	1.4	1.1	1.1	1.1	1.1	1.0	0.9	0.7	0.5	0.4	0.3	0.2	0.2	0.1	0.1	0.0	0.0	0.0
17 PROFUND ADVISORS, LLC	1.3	1.3	0.0																	
18 SG CAPITAL MANAGEMENT, LLC	1.3	1.3	1.3	1.3	1.3	1.3	1.4	1.4	1.4	1.4	1.3	1.3	1.3	1.3	1.4	1.5	1.6	1.6	1.6	1.6
19 NORTHERN TRUST INVESTMENTS	1.2	1.1	1.1	1.0	1.0	1.0	0.9	0.9	0.9	0.9	0.8	0.8	0.7	0.7	0.7	0.7	0.7	0.7	0.6	0.6
20 RAYMOND JAMES & ASSOCIATES, INC.	1.1	1.0	0.7	0.7	0.6	0.6	0.6	0.6	0.5	0.5	0.5	0.5	0.5	0.5	0.6	0.6	0.6	0.5	0.5	0.5
21 DIMENSIONAL FUND ADVISORS, L.P.	1.1	1.0	0.7	0.6	0.6	0.6	0.6	0.6	0.5	0.5	0.5	0.5	0.5	0.5	0.6	0.6	0.6	0.5	0.5	0.5
22 INVESCO CAPITAL MANAGEMENT, LLC	1.1	1.0	0.7	0.6	0.6	0.6	0.6	0.6	0.5	0.5	0.5	0.5	0.5	0.5	0.6	0.6	0.6	0.5	0.5	0.5
23 GOLDMAN SACHS & CO.	1.1	0.8	0.7	0.5	0.5	0.4	0.4	0.4	0.4	0.3	0.5	0.8	0.7	0.4	0.2	0.3	1.1	1.6	2.0	2.4
24 CHARLES SCHWAB INVESTMENT MANAGEMENT, INC	1.1	1.0	0.9	0.8	0.8	0.8	0.7	0.7	0.7	0.6	0.6	0.5	0.5	0.5	0.5	0.5	0.4	0.4	0.4	0.6
25 INVESCO ADVISORS, INC.	1.0	1.2	1.4	1.6	1.7	1.7	1.6	1.6	1.5	1.2	1.0	0.8	0.7	0.5	0.5	0.4	0.5	0.5	0.5	0.5
26 OLD REPUBLIC ASSET MANAGEMENT	0.9	0.8	0.8	0.6	0.6	0.6	0.6	0.6	0.6	0.6	0.6	0.6	0.6	0.6	0.6	0.6	0.4	0.5	0.5	0.5
27 BNP PARIBAS ASSET MANAGEMENT FRANCE	0.9	0.0	0.0	0.0	0.0	0.0	0.0	0.0	0.0	0.1	0.1	0.0	0.0	0.0	0.0	0.0	0.0	0.0	0.0	0.0
28 SARASIN & PARTNERS LLP	0.9	1.6	1.5	1.2	0.6	0.5	0.5	0.5	0.5	0.5	0.5	0.6	0.6	0.7	0.7	0.8	0.8	0.8	1.0	1.1
29 BLACKROCK ADVISORS, LLC	0.8	0.6	0.6	0.7	0.7	0.7	0.6	0.6	0.5	0.5	0.5	0.5	0.5	0.5	0.5	0.5	0.5	0.5	0.5	0.5
30 SCHRODER INVESTMENT MANAGEMENT LTD	0.7	0.8	0.2	0.2	0.5	1.0	0.6	0.6	0.5	0.4	0.6	0.3	0.0	0.0	0.1	1.1	1.3	1.2	0.0	0.0
31 STATE STREET GLOBAL ADVISORS, LTD	0.7	0.7	0.7	0.7	0.7	0.8	0.8	0.7	0.6	0.7	0.6	0.7	0.9	1.0	1.0	0.9	0.9	1.0	0.8	0.7
32 COLUMBIA THREADNEEDLE INVESTMENTS (U.S.)	0.7	0.1	0.1	0.1	0.1	0.1	0.1	0.1	0.1	0.1	0.1	0.1	0.1	0.1	0.1	0.1	0.1	0.1	0.8	0.7
33 LEGAL & GENERAL INVESTMENT MANAGEMENT LTD.	0.7	0.7	0.8	0.8	0.7	0.7	0.6	0.6	0.6	0.6	0.6	0.6	0.6	0.6	0.6	0.6	0.6	0.6	0.6	0.6
34 FIRST TRUST ADVISORS, L.P.	0.7	0.6	0.5	0.5	0.4	0.4	0.3	0.6	0.6	0.3	0.6	1.1	1.2	0.6	0.4	0.3	0.7	0.5	0.4	0.3
35 MORGAN STANLEY & COMPANY, LLC	0.6	0.6	1.2	0.6	0.7	0.9	0.9	1.1	0.5	0.9	1.0	0.4	0.4	0.5	0.5	0.5	0.5	0.5	0.5	0.5
36 SILVERCREST ASSET MANAGEMENT GROUP, LLC	0.6	0.5	0.0	0.0	0.0	0.0	0.0	0.0	0.0	0.0	0.0	0.0	0.0	0.0	0.0	0.0	0.0	0.0	0.0	0.0
37 GW&K INVESTMENT MGMT, LLC	0.6	0.6	0.6	0.6	0.6	0.6	0.6	0.6	0.6	0.6	0.5	0.5	0.4	0.4	0.3	0.3	0.4	0.5	0.5	0.5
38 BECKER CAPITAL MANAGEMENT, INC.	0.6	0.5	0.5	0.4																
39 TIAA-CREF INVESTMENT MANAGEMENT LLC	0.5	0.7	0.9	0.9	0.9	0.9	1.0	1.0	0.8	0.8	0.5	0.4	1.0	0.4	0.4	0.6	0.4	0.4	0.6	0.9
40 J.P. MORGAN SECURITIES, LLC	0.5	0.5	0.5	0.4	0.7	0.6	0.5	0.3	0.4	0.4	0.2	0.2	0.3	0.1	0.1	0.2	0.2	0.3	0.3	0.2
41 BERKSHIRE ASSET MANAGEMENT, LLC	0.5	0.5	0.5	0.5	0.5	0.5	0.4	0.2	0.2	0.4	0.4	0.4	0.5	0.5	0.5	0.5	0.4	0.4	0.4	0.4
42 THE WELCH GROUP, LLC	0.5	0.5	0.3	0.3	0.3	0.3	0.3	0.3	0.3	0.4	0.4	0.4	0.4	0.4	0.4	0.4	0.4	0.4	0.3	0.3
43 SPECTECH THORSON CAPITAL GROUP, INC.	0.5	0.4	0.4	0.4	0.4	0.4	0.3	0.3	0.3	0.3	0.3	0.3	0.4	0.4	0.4	0.4	0.3	0.3	0.3	0.3
44 BLACKROCK ASSET MANAGEMENT CANADA, LTD	0.5	0.6	0.6	0.5	0.5	0.5	0.5	0.5	0.5	0.5	0.4	0.5	0.6	0.7	0.7	0.7	0.7	0.7	0.6	0.6
45 CREDIT SUISSE AG (ASSET MGMT)	0.5	0.4	0.5	0.5	0.4	0.4	0.4	0.4	0.4	0.1	0.2	0.2	0.2	0.2	0.2	0.2	0.2	0.1	0.1	0.1
46 BNY ASSET MANAGEMENT	0.5	0.5	0.5	0.5	0.5	0.5	0.5	0.5	0.5	0.5	0.6	0.6	0.6	0.7	0.7	0.6	0.6	0.6	0.6	0.7
47 USAA ASSET MANAGEMENT	0.4	0.3	0.0	0.0	0.0	0.1	0.0	0.0	0.0	0.0	0.0	0.0	0.0	0.0	0.0	0.0	0.0	0.0	0.0	0.0
48 USAA ASSET MANAGEMENT COMPANY	0.4	0.4	0.4	0.4	0.4	0.4	0.4	0.5	0.5	0.5	0.6	0.5	0.7	0.5	0.5	0.5	0.5	0.5	0.5	0.6
49 CALIF PUBLIC EMPLOYEES RETIREMENT SYSTEM	0.4	0.4	0.1	0.1	0.1	0.1	0.2	0.1	0.1	0.1	0.1	0.1	0.1	0.1	0.1	0.1	0.1	0.1	0.1	0.1
50 TD ASSET MANAGEMENT, INC.	0.4	0.4	0.5	0.5	0.5	0.5	0.4	0.4	0.4	0.4	0.2	0.2	0.2	0.1	0.1	0.1	0.1	0.1	0.1	0.1
51 SCHWEIZERISCHE NATIONALBANK	0.4	0.4	0.4	0.4	0.4	0.4	0.4	0.4	0.4	0.4	0.4	0.4	0.4	0.4	0.4	0.4	0.4	0.4	0.4	0.4
52 SUMITOMO MITSUI TRUST ASSET MGMT, LTD	0.4	0.4	0.4	0.4	0.4	0.4	0.4	0.4	0.4	0.4	0.4	0.4	0.4	0.4	0.3	0.3	0.3	0.4	0.4	0.4

TOP HOLDERS - INSTITUTIONAL & FORMER MANAGEMENT AND DIRECTORS (in millions of shares)

Institution Name	2018			2017			2016			2015			2014			2013			
	Dec	Jun	Mar	Dec	Jun	Mar	Dec	Jun	Mar	Dec	Jun	Mar	Dec	Jun	Mar	Dec	Jun	Mar	
Previous Holders of More Than 1 Million Shares																			
ADVISORS ASSET MANAGEMENT, INC.	0.0	0.0	0.0	0.0	0.0	0.0	0.0	0.0	0.0	0.1	0.1	0.1	0.2	0.3	0.3	0.3	0.3	0.3	0.2
CAPITAL GUARDIAN TRUST CO.											0.0	0.0	1.8	0.3	0.6	0.5	0.5	0.5	0.5
CAPITAL RESEARCH GLOBAL INVESTORS													0.0	2.5	2.5	2.5	2.5	2.5	2.5
CINFIN CAPITAL MANAGEMENT CO.												0.0	1.1	2.2	2.2	2.2	2.2	2.2	2.2
CRAMER ROSENTHAL MCGLYNN, LLC								0.2	0.9	1.3	1.6	0.9							
CREDIT SUISSE SECURITIES (US) LLC	0.2	0.2	0.2	0.1	0.1	0.1	0.1	0.1	0.1	0.7	0.8	0.8	0.8	1.0	1.0	0.9	0.6	0.7	0.8
EATON VANCE MANAGEMENT, INC.	0.1	0.1	0.1	0.1	0.1	0.1	0.1	0.1	0.1	0.1	0.1	0.1	0.1	0.2	0.2	0.2	0.2	0.2	0.2
FIDELITY MANAGEMENT & RESEARCH	0.1	0.0	0.0	0.1	0.5	1.3	2.3	1.9	1.7	2.3	1.1	1.2	1.6	0.6	1.1	1.4	1.5	1.8	1.5
FRANKLIN ADVISORY SERVICES, LLC				1.5	1.5	1.5	1.5	1.5	1.5	1.5	1.5	1.5	1.5	1.5	1.6	1.6	1.6	1.6	1.6
GOLDMAN SACHS ASSET MANAGEMENT, L.P. (U.S.)	0.1	0.1	0.2	0.1	0.1	0.1	0.1	0.1	0.3	0.2	0.7	0.8	0.3	0.2	0.4	0.3	0.4	0.4	0.4
HARRIS ASSOCIATES																			
HAMLIN CAPITAL MANAGEMENT																			
INTECH INVESTMENT MANAGEMENT LLC								1.4	1.4	1.0	1.4	2.3	2.4	0.0	1.1	1.7	1.6	1.1	1.1
KAMES CAPITAL PLC				0.8	0.7	1.2	0.9	1.6	1.4	1.0	1.4	2.3	2.4	1.9	0.6	0.1	0.0	0.3	2.8
J.P. MORGAN INVESTMENT MANAGEMENT, INC.	0.1	0.1	0.1	0.0	0.0	0.2	0.1	0.2	0.3	0.3	0.3	0.3	0.3	0.3	0.3	0.2	0.2	0.2	0.2
LOS ANGELES CAPITAL MGMT & EQUITY RESEARCH				0.2	0.2	0.3	0.3	0.3	0.4	0.4	0.5	0.5	0.3	0.3	0.1	0.0	0.0	0.1	0.1
NEUBERGER BERMAN INVESTMENT ADVISORS, LLC	0.2	0.2	0.2	0.2	0.0	0.0	0.0	0.0	0.0	0.0	0.0	0.0	0.0	0.0	0.0	1.2	1.2	1.2	1.2
QUANTITATIVE MANAGEMENT ASSOCIATES LLC	0.2	0.2	0.2	0.2	0.2	0.2	0.2	0.2	0.2	0.2	0.2	0.2	0.2	0.2	0.2	0.2	0.3	0.3	0.3
REGIONS INVESTMENT MANAGEMENT, INC	0.0	0.0	0.0	0.0	0.0	0.0	0.0	0.0	0.0	0.0	0.1	0.1	0.1	0.1	0.1	0.1	0.1	0.1	0.1
WINTON CAPITAL MANAGEMENT, LTD	0.0	0.0	0.0	0.0	0.0	0.1	0.0	0.1	0.2	0.1	0.6	0.7	0.8	0.1	1.4	1.2	1.6	1.6	1.6

quant

broker

quant

index

quant

quant

quant

*This page is left
intentionally blank.*